

NQF-ENDORSED VOLUNTARY CONSENSUS STANDARDS FOR HOSPITAL CARE

**Measure Information Form
Collected For:
The Joint Commission Only
CMS Voluntary Only**

Measure Set: Acute Myocardial Infarction (AMI)

Set Measure ID #: AMI-10

Performance Measure Name: Statin Prescribed at Discharge

Description: Acute myocardial infarction (AMI) patients who are prescribed a statin at hospital discharge.

Rationale: Several randomized clinical trials have proven the benefits of statin drugs (also known as HMG Co-A reductase inhibitors) in reducing the risk of death and recurrent cardiovascular events in a broad range of patients with established cardiovascular disease, including those with prior myocardial infarction (4S, 1994; Sacks, 1996; LIPID Study Group, 1998; and MRC/BHF Heart Protection Study, 2002). Current ACC/AHA guidelines place a strong emphasis on the initiation or maintenance of statin drugs for patients hospitalized with AMI, particularly those with LDL-cholesterol levels above 100 mg/dL (Smith, 2011; Anderson, 2007; and O’Gara, 2013). As a result of the strength of the evidence and guideline support, the ACC/AHA have developed a performance measure to assess this aspect of care for patients with acute myocardial infarction (Krumholz, 2008). Because statins are generally well-tolerated, most patients with AMI are appropriate candidates for this therapy.

Type of Measure: Process

Improvement Noted As: An increase in rate

Numerator Statement: AMI patients who are prescribed a statin medication at hospital discharge.

Included Populations: Not applicable

Excluded Populations: None

Data Elements:

Statin Medication Prescribed at Discharge

Denominator Statement: AMI patients.

Included Populations:

- Discharges with an *ICD-9-CM Principal Diagnosis Code* for AMI as defined in Appendix A, Table 1.1

Excluded Populations:

- Patients less than 18 years of age
- Patients who have a Length of Stay greater than 120 days
- Patients with *Comfort Measures Only* documented
- Patients enrolled in clinical trials
- Patients discharged to another hospital
- Patients who left against medical advice
- Patients who expired
- Patients discharged to home for hospice care
- Patients discharged to a health care facility for hospice care
- Patients with LDL less than 100 mg/dL within the first 24 hours after hospital arrival or 30 days prior to hospital arrival and not discharged on a statin
- Patients with a *Reason for Not Prescribing Statin Medication at Discharge*

Data Elements:

- *Admission Date*
- *Birthdate*
- *Clinical Trial*
- *Comfort Measures Only*
- *Discharge Date*
- *Discharge Disposition*
- *ICD-9-CM Principal Diagnosis Code*
- *LDL-c Less Than 100 mg/dL*
- *Reason for Not Prescribing Statin Medication at Discharge*

Risk Adjustment: No

Data Collection Approach: Retrospective data sources for required data elements include administrative data and medical record documents. Some hospitals may prefer to gather data concurrently by identifying patients in the population of interest. This approach provides opportunities for improvement at the point of care/service. However, complete documentation includes the principal or other ICD-9-CM diagnosis and procedure codes, which require retrospective data entry.

Data Accuracy: Variation may exist in the assignment of ICD-9-CM codes; therefore, coding practices may require evaluation to ensure consistency.

Measure Analysis Suggestions: None

Sampling: Yes, please refer to the measure set specific sampling requirements and for additional information see the Population and Sampling Specifications section.

Data Reported As: Aggregate rate generated from count data reported as a proportion.

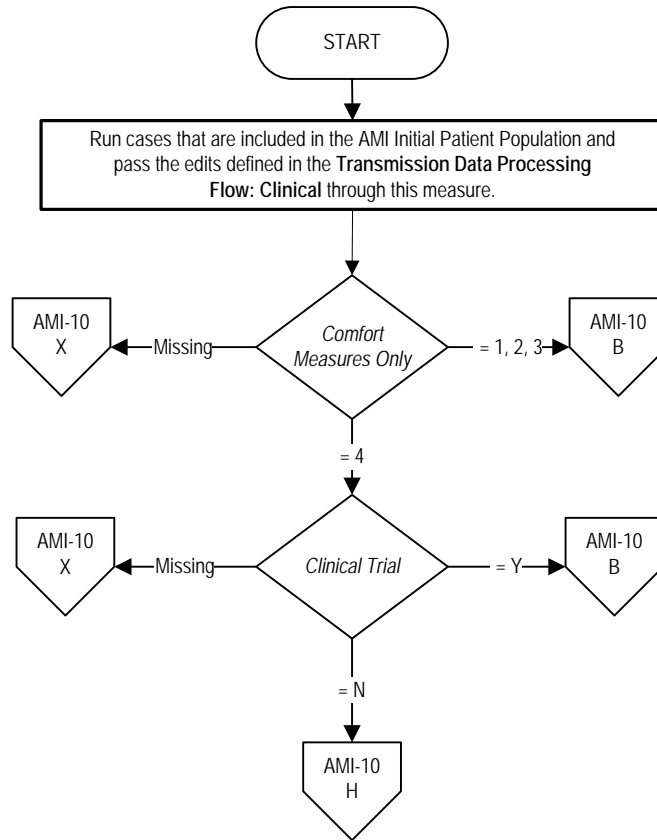
Selected References:

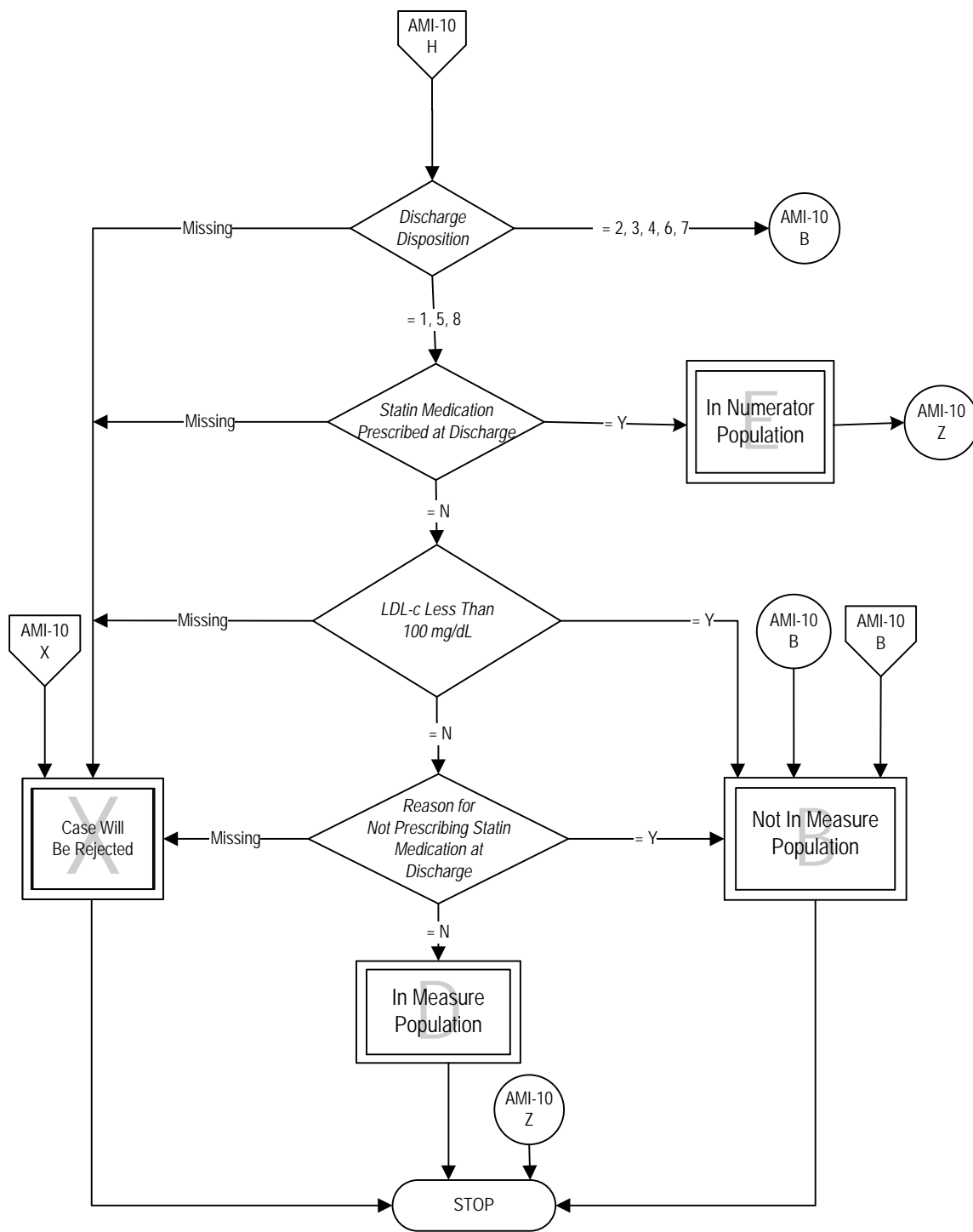
- Anderson JL, Adams CD, Antman EM, Bridges CR, Califf RM, Casey DE Jr, et al. ACC/AHA 2007 guidelines for the management of patients with unstable angina/non–ST-elevation myocardial infarction: a report of the American College of Cardiology/American Heart Association Task Force on Practice Guidelines (Writing Committee to Revise the 2002 Guidelines for the Management of Patients With Unstable Angina/Non–ST-Elevation Myocardial Infarction): developed in collaboration with the American College of Emergency Physicians, American College of Physicians, Society for Academic Emergency Medicine, Society for Cardiovascular Angiography and Interventions, and Society of Thoracic Surgeons. *J Am Coll Cardiol.* 2007;50:e1–157.
- Krumholz HM, Anderson JL, Bachelder BL, Fesmire FM, Fihn SD, Foody JM, et al. ACC/AHA 2008 performance measures for adults with ST-elevation and non–ST-elevation myocardial infarction: a report of the American College of Cardiology/American Heart Association Task Force on Performance Measures (Writing Committee to Develop Performance Measures for ST-Elevation and Non–ST-Elevation Myocardial Infarction). *J Am Coll Cardiol.* 2008;52:2046 –99.
- The Long-Term Intervention with Pravastatin in Ischaemic Disease (LIPID) Study Group. Prevention of cardiovascular events and death with pravastatin in patients with coronary heart disease and a broad range of initial cholesterol levels. *N Engl J Med.* 1998;339:1349-57.
- MRC/BHF Heart Protection Study of cholesterol lowering with simvastatin in 20,536 high-risk individuals: a randomised placebo-controlled trial. *Lancet.* 2002;360:7-22.
- O’Gara PT, Kushner FG, Ascheim DD, Casey DE, Jr, Chung MK, de Lemos JA, et al. 2013 ACCF/AHA guideline for the management of ST-elevation myocardial infarction: a report of the American College of Cardiology Foundation/American Heart Association Task Force on Practice Guidelines. *J Am Coll Cardiol* 2013;61:485–510.
- Randomised trial of cholesterol lowering in 4444 patients with coronary heart disease: the Scandinavian Simvastatin Survival Study (4S). *Lancet.* 1994;344:1383-9.
- Sacks FM, Pfeffer MA, Moyer LA, et al, for the Cholesterol and Recurrent Events Trial investigators. The effect of pravastatin on coronary events after myocardial infarction in patients with average cholesterol levels. *N Engl J Med.* 1996;335:1001-9.
- Smith SC Jr, Benjamin EJ, Bonow RO, Braun LT, Creager MA, et al. AHA/ACCF secondary prevention and risk reduction therapy for patients with coronary and other atherosclerotic vascular disease: 2011 update: a guideline from the American Heart Association and American College of Cardiology Foundation. *Circulation.* 2011;124:2458–2473.

AMI-10: Statin Prescribed at Discharge

Numerator: AMI patients who are prescribed a statin medication at hospital discharge.

Denominator: AMI patients.





Acute Myocardial Infarction (AMI)-10: Statin Prescribed at Discharge

Numerator: Acute Myocardial Infarction (AMI) patients who are prescribed a statin medication at hospital discharge.

Denominator: AMI patients.

1. Start processing. Run cases that are included in the AMI Initial Patient Population and pass the edits defined in the Transmission Data Processing Flow: Clinical through this measure.
2. Check Comfort Measures Only
 - a. If Comfort Measures Only is missing, the case will proceed to a Measure Category Assignment of X and will be rejected. Stop processing.
 - b. If Comfort Measures Only equals 1, 2, or 3 the case will proceed to a Measure Category Assignment of B and will not be in the Measure Population. Stop processing.
 - c. If Comfort Measures Only equals 4, continue processing and proceed to Clinical Trial.
3. Check Clinical Trial
 - a. If Clinical Trial is missing, the case will proceed to a Measure Category Assignment of X and will be rejected. Stop processing.
 - b. If Clinical Trial equals Yes, the case will proceed to a Measure Category Assignment of B and will not be in the Measure Population. Stop processing.
 - c. If Clinical Trial equals No, continue processing and proceed to Discharge Disposition.
4. Check Discharge Disposition
 - a. If Discharge Disposition is missing, the case will proceed to a Measure Category Assignment of X and will be rejected. Stop processing.
 - b. If Discharge Disposition is equal to 2, 3, 4, 6 or 7, the case will proceed to a Measure Category Assignment of B and will not be in the Measure Population. Stop processing.
 - c. If Discharge Disposition is equal to 1, 5 or 8, continue processing and proceed to Statin Medication Prescribed at Discharge.
5. Check Statin Medication Prescribed at Discharge
 - a. If Statin Medication Prescribed at Discharge is missing, the case will proceed to a Measure Category Assignment of X and will be rejected. Stop processing.
 - b. If Statin Medication Prescribed at Discharge equals Yes, the case will proceed to a Measure Category Assignment of E and will be in the Numerator Population. Stop processing.

- c. If Statin Prescribed at Discharge equals No, continue processing and proceed to LDL-c Less Than 100 mg/dL.
6. Check LDL-c Less Than 100 mg/dL
- a. If LDL-c Less Than 100 mg/dL is missing, the case will proceed to a Measure Category Assignment of X and will be rejected. Stop processing.
 - b. If LDL-c Less Than 100 mg/dL equals Yes, the case will proceed to a Measure Category Assignment of B and will not be in the Measure Population. Stop processing.
 - c. If LDL-c Less Than 100 mg/dL equals No, continue processing and proceed to Reason for Not Prescribing Statin Medication at Discharge.
7. Check Reason for Not Prescribing Statin Medication at Discharge
- a. If Reason for Not Prescribing Statin Medication at Discharge is missing, the case will proceed to a Measure Category Assignment of X and will be rejected. Stop processing.
 - b. If Reason for Not Prescribing Statin Medication at Discharge equals Yes, the case will proceed to a Measure Category Assignment of B and will not be in the Measure Population. Stop processing.
 - c. If Reason for Not Prescribing Statin Medication at Discharge equals No, the case will proceed to a Measure Category Assignment of D and will be in the Measure Population. Stop processing.