

**Measure Information Form
Collected For:
CMS Voluntary Only
The Joint Commission - Retired**

Measure Set: Heart Failure (HF)

Set Measure ID#: HF-1

Performance Measure Name: Discharge Instructions

Description: Heart failure patients discharged home with written instructions or educational material given to patient or caregiver at discharge or during the hospital stay addressing **all** of the following: activity level, diet, discharge medications, follow-up appointment, weight monitoring, and what to do if symptoms worsen.

Rationale: Patient non-compliance with diet and medications is an important reason for changes in clinical status. Health care professionals should ensure that patients and their families understand their dietary restrictions, activity recommendations, prescribed medication regimen, and the signs and symptoms of worsening heart failure. National guidelines strongly support the role of patient education (Jessup, 2009 and HFSA, 2010).

Type of Measure: Process

Improvement Noted As: An increase in the rate

Numerator Statement: Heart failure patients with documentation that they or their caregivers were given written discharge instructions or other educational material addressing **all** of the following:

1. activity level
2. diet
3. discharge medications
4. follow-up appointment
5. weight monitoring
6. what to do if symptoms worsen

Included Populations: Not Applicable

Excluded Populations: None

Data Elements:

- *Discharge Instructions Address Activity*
- *Discharge Instructions Address Diet*

- *Discharge Instructions Address Follow-up*
- *Discharge Instructions Address Medications*
- *Discharge Instructions Address Symptoms Worsening*
- *Discharge Instructions Address Weight Monitoring*

Denominator Statement: Heart failure patients discharged home

Included Populations: Discharges with:

- *An ICD-9-CM Principal Diagnosis Code for heart failure as defined in Appendix A, Table 2.1*
- AND**
- A discharge to home, home care, or court/law enforcement

Excluded Populations:

- Patients who had a left ventricular assistive device (LVAD) or heart transplant procedure during hospital stay (ICD-9-CM procedure code for LVAD and heart transplant as defined in Appendix A, Table 2.2)
- Patients less than 18 years of age
- Patients who have a Length of Stay greater than 120 days
- Patients enrolled in clinical trials
- Patients with *Comfort Measures Only* documented

Data Elements:

- *Admission Date*
- *Birthdate*
- *Clinical Trial*
- *Comfort Measures Only*
- *Discharge Date*
- *Discharge Disposition*
- *ICD-9-CM Other Procedure Codes*
- *ICD-9-CM Principal Diagnosis Code*
- *ICD-9-CM Principal Procedure Code*

Risk Adjustment: No

Data Collection Approach: Retrospective data sources for required data elements include administrative data and medical record documents. Some hospitals may prefer to gather data concurrently by identifying patients in the population of interest. This approach provides opportunities for improvement at the point of care/service. However, complete documentation includes the principal or other ICD-9-CM diagnosis and procedure codes, which require retrospective data entry.

Data Accuracy: Variation may exist in the assignment of ICD-9-CM codes; therefore, coding practices may require evaluation to ensure consistency.

Measure Analysis Suggestions: The data elements for each of the six discharge instruction elements provide the opportunity to assess each component individually.

However, completion of all six instruction categories is required for this composite measure.

Sampling: Yes, please refer to the measure set specific sampling requirements and for additional information see the Population and Sampling Specifications Section.

Data Reported as: Aggregate rate generated from count data reported as a proportion

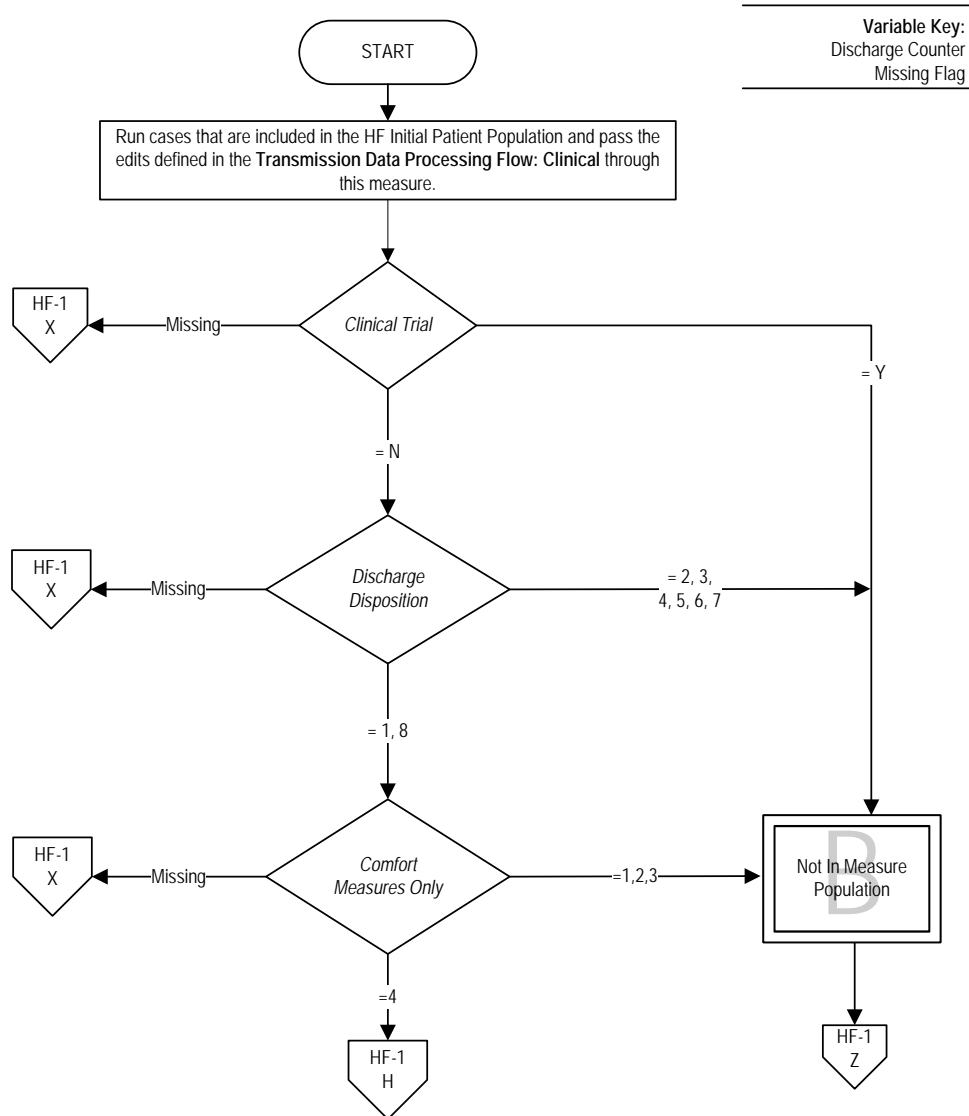
Selected References:

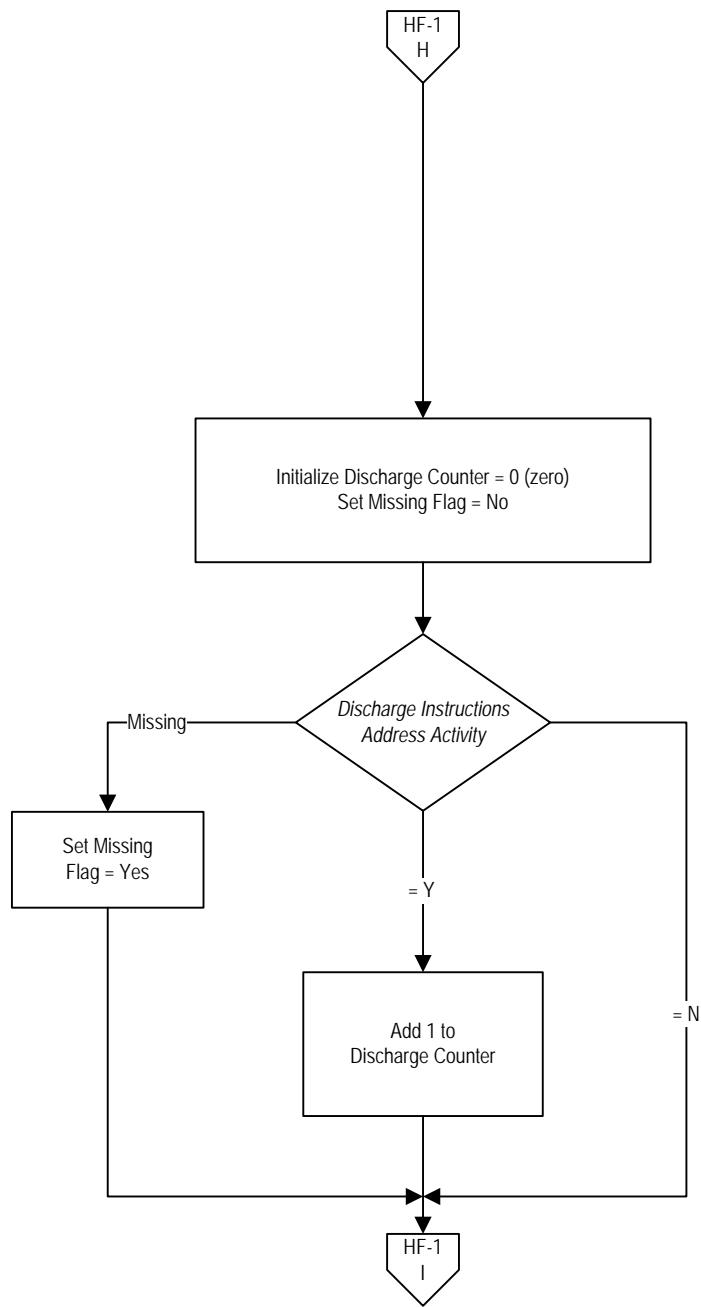
- Bonow RO, Bennett S, Casey DE, Ganiats TG, Hlatky MA, Konstam MA, et al. ACC/AHA Clinical Performance Measures for Adults With Chronic Heart Failure: a report of the American College of Cardiology/American Heart Association Task Force on Performance Measures (Writing Committee to Develop Heart Failure Clinical Performance Measures). *J Am Coll Cardiol*. 2005;46:1144–78.
- Bonow RO, Ganiats TG, Beam CT, Blake K, Casey DE Jr, Goodlin SJ, et al. ACCF/AHA/AMA-PCPI 2011 performance measures for adults with heart failure: a report of the American College of Cardiology Foundation/American Heart Association Task Force on Performance Measures and the American Medical Association-Physician Consortium for Performance Improvement. *J Am Coll Cardiol* 2012;59:1812–32.
- Jessup M, Abraham WT, Casey DE, Feldman AM, Francis GS, Ganiats TG, et al, writing on behalf of the 2005 Guideline Update for the Diagnosis and Management of Chronic Heart Failure in the Adult Writing Committee. 2009 focused update: ACCF/AHA guidelines for the diagnosis and management of heart failure in adults: a report of the American College of Cardiology/American Heart Association Task Force on Practice Guidelines. *J Am Coll Cardiol*. 2009;53:1343– 82.
- Lindenfeld J, Albert NM, Boehmer JP, Collins SP, Ezekowitz JA, Givertz MM, et al. Executive Summary: HFSA 2010 Comprehensive Heart Failure Practice Guideline. *J Card Fail* 2010; 16:475-539.

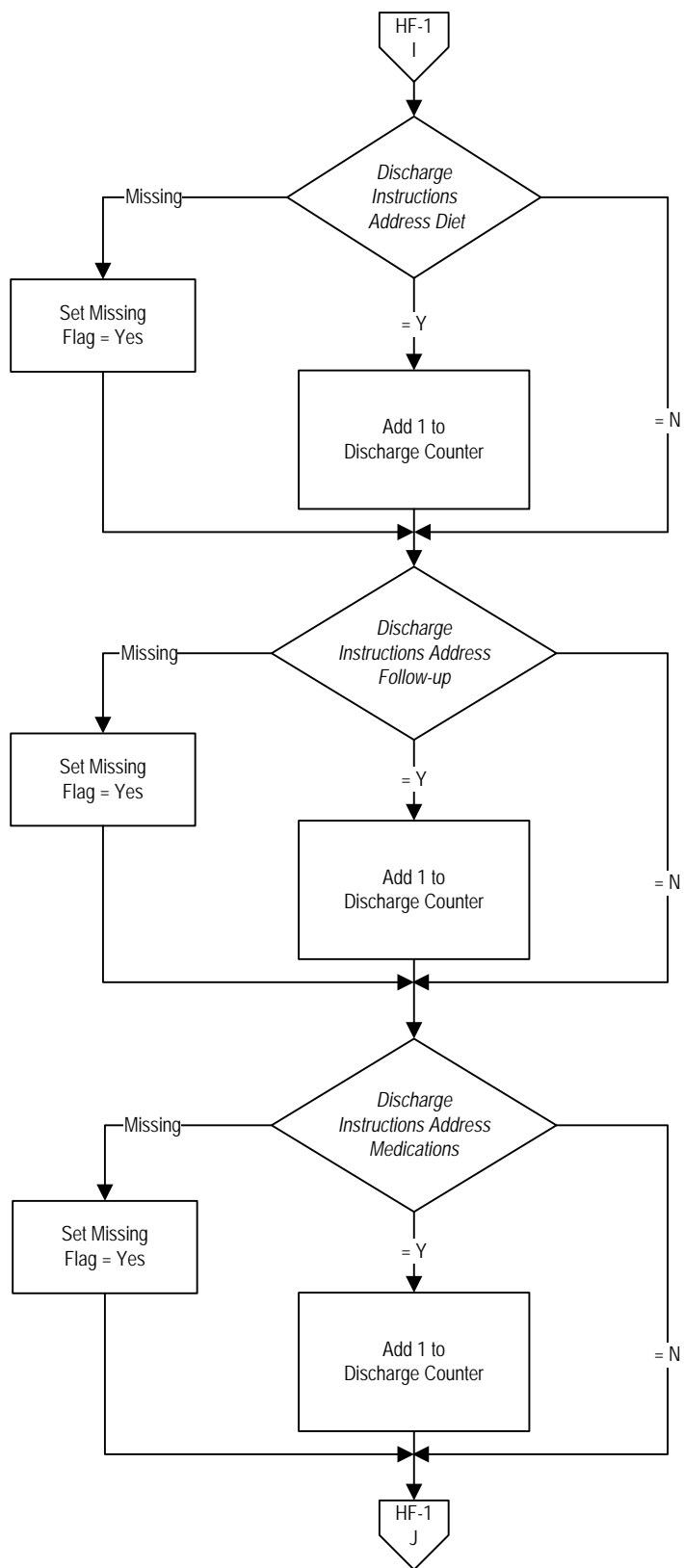
HF-1: Discharge Instructions

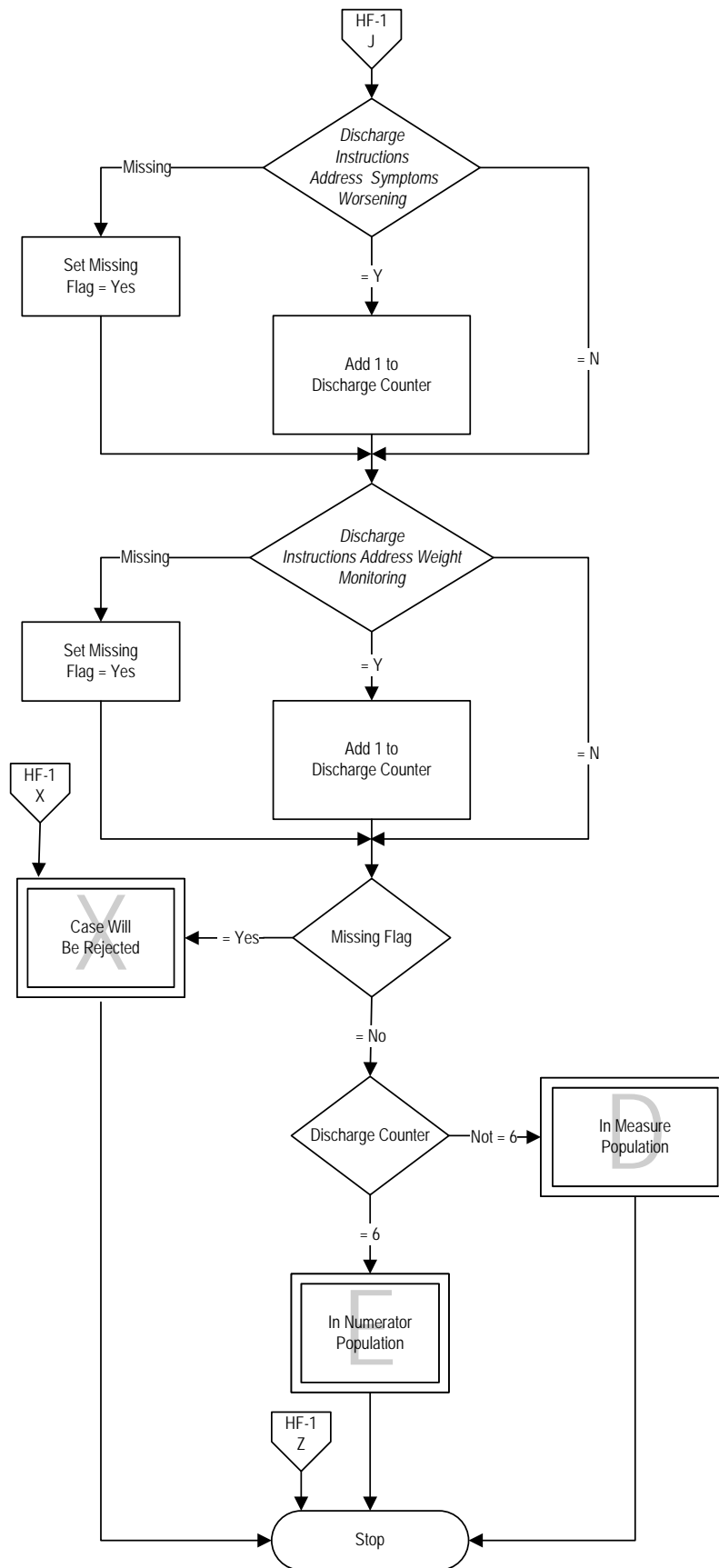
Numerator: Heart failure patients with documentation that they or their caregivers were given written discharge instructions or other educational material addressing all of the following: activity level, diet, discharge medications, follow-up appointment, weight monitoring and what to do if symptoms worsen.

Denominator: Heart failure patients discharged home.









Heart Failure (HF)-1: Discharge Instructions

Numerator: Heart failure patients with documentation that they or their caregivers were given written discharge instructions or other educational material addressing all of the following: activity level, diet, discharge medications, follow-up appointment, weight monitoring and what to do if symptoms worsen.

Denominator: Heart failure patients discharged to home.

Variable Key: Discharge Counter and Missing Flag

1. Start processing. Run cases that are included in the Heart Failure Initial Patient Population and pass the edits defined in the Transmission Data Processing Flow: Clinical through this measure.
2. Check Clinical Trial
 - a. If Clinical Trial is missing, the case will proceed to a Measure Category Assignment of X and will be rejected. Stop processing.
 - b. If Clinical Trial equals Yes, the case will proceed to a Measure Category Assignment of B and will not be in the measure population. Stop processing.
 - c. If Clinical Trial equals No, continue processing and proceed to Discharge Disposition.
3. Check Discharge Disposition
 - a. If Discharge Disposition is missing, the case will proceed to a Measure Category Assignment of X and will be rejected. Stop processing.
 - b. If Discharge Disposition equals 2, 3, 4, 5, 6 or 7, the case will proceed to a Measure Category Assignment of B and will not be in the measure population. Stop processing.
 - c. If Discharge Disposition equals 1 or 8, continue processing and proceed to Comfort Measures Only.
4. Check Comfort Measures Only
 - a. If Comfort Measures Only is missing, the case will proceed to a Measure Category Assignment of X and will be rejected. Stop processing.
 - b. If Comfort Measures Only equals 1, 2 or 3, the case will proceed to a Measure Category Assignment of B and will not be in the measure population. Stop processing.
 - c. If Comfort Measures Only equals 4, continue processing.
5. Initialize Discharge Counter to equal zero. Set Missing Flag to equal No. Continue processing and proceed to Discharge Instructions Address Activity.

6. Check Discharge Instructions Address Activity
 - a. If Discharge Instructions Address Activity is missing, set the Missing Flag to equal Yes. Continue processing and proceed to Discharge Instructions Address Diet.
 - b. If Discharge Instructions Address Activity equals No, continue processing and proceed to Discharge Instructions Address Diet.
 - c. If Discharge Instructions Address Activity equals Yes, add one to the Discharge Counter. Continue processing and proceed to Discharge Instructions Address Diet.

7. Check Discharge Instructions Address Diet
 - a. If Discharge Instructions Address Diet is missing, set the Missing Flag to equal Yes. Continue processing and proceed to Discharge Instructions Address Follow-up.
 - b. If Discharge Instructions Address Diet equals No, continue processing and proceed to Discharge Instructions Address Follow-up.
 - c. If Discharge Instructions Address Diet equals Yes, add one to the Discharge Counter. Continue processing and proceed to Discharge Instructions Address Follow-up.

8. Check Discharge Instructions Address Follow-up
 - a. If Discharge Instructions Address Follow-up is missing, set the Missing Flag to equal Yes. Continue processing and proceed to Discharge Instructions Address Medications.
 - b. If Discharge Instructions Address Follow-up equals No, continue processing and proceed to Discharge Instructions Address Medications.
 - c. If Discharge Instructions Address Follow-up equals Yes, add one to the Discharge Counter. Continue processing and proceed to Discharge Instructions Address Medications.

9. Check Discharge Instructions Address Medications
 - a. If Discharge Instructions Address Medications is missing, set the Missing Flag to equal Yes. Continue processing and proceed to Discharge Instructions Address Symptoms Worsening.
 - b. If Discharge Instructions Address Medications equals No, continue processing and proceed to Discharge Instructions Address Symptoms Worsening.
 - c. If Discharge Instructions Address Medications equals Yes, add one to the Discharge Counter. Continue processing and proceed to Discharge Instructions Address Symptoms Worsening.

10. Check Discharge Instructions Address Symptoms Worsening

- a. If Discharge Instructions Address Symptoms Worsening is missing, set the Missing Flag to equal Yes. Continue processing and proceed to Discharge Instructions Address Weight Monitoring.
 - b. If Discharge Instructions Address Symptoms Worsening equals No, continue processing and proceed to Discharge Instructions Address Weight Monitoring.
 - c. If Discharge Instructions Address Symptoms Worsening equals Yes, add one to the Discharge Counter. Continue processing and proceed to Discharge Instructions Address Weight Monitoring.
11. Check Discharge Instructions Address Weight Monitoring
- a. If Discharge Instructions Address Weight Monitoring is missing, set the Missing Flag to equal Yes. Continue processing and proceed to Missing Flag check.
 - b. If Discharge Instructions Address Weight Monitoring equals No, continue processing and proceed to Missing Flag check.
 - c. If Discharge Instructions Address Weight Monitoring equals Yes, add one to the Discharge Counter. Continue processing and proceed to Missing Flag check.
12. Check Missing Flag
- a. If Missing Flag equals Yes, the case will proceed to a Measure Category Assignment of X and will be rejected. Stop processing.
 - b. If Missing Flag equals No, continue processing and proceed to Discharge Counter.
13. Check Discharge Counter
- a. If Discharge Counter is not equal to six, the case will proceed to a Measure Category Assignment of D and will be in the Measure Population. Stop processing.
 - b. If Discharge Counter equals six, the case will proceed to a Measure Category Assignment of E and will be in the Numerator Population. Stop processing.