

Measure Information Form

Measure Set: Stroke (STK)

Set Measure ID #: STK-8

Performance Measure Name: Stroke Education

Description: Ischemic or hemorrhagic stroke patients or their caregivers who were given educational materials during the hospital stay addressing **all** of the following: activation of emergency medical system, need for follow-up after discharge, medications prescribed at discharge, risk factors for stroke, and warning signs and symptoms of stroke.

Rationale: There are many examples of how patient education programs for specific chronic conditions have increased healthful behaviors, improved health status, and/or decreased health care costs of their participants. Clinical practice guidelines include recommendations for patient and family education during hospitalization as well as information about resources for social support services. Some clinical trials have shown measurable benefits in patient and caregiver outcomes with the application of education and support strategies. The type of stroke experienced and the resulting outcomes will play a large role in determining not only the course of treatment but also what education will be required. Patient education should include information about the event (e.g., cause, treatment, and risk factors), the role of various medications or strategies, as well as desirable lifestyle modifications to reduce risk or improve outcomes. Family/caregivers will also need guidance in planning effective and realistic care strategies appropriate to the patient's prognosis and potential for rehabilitation.

Type of Measure: Process

Improvement Noted As: An increase in rate

Numerator Statement: Ischemic or hemorrhagic stroke patients with documentation that they or their caregivers were given educational material addressing **all** of the following:

1. Activation of emergency medical system
2. Follow-up after discharge
3. Medications prescribed at discharge
4. Risk factors for stroke
5. Warning signs and symptoms of stroke

Included Populations: Not applicable

Excluded Populations: None

Data Elements:

- *Education Addresses Activation of Emergency Medical System*
- *Education Addresses Follow-up After Discharge*
- *Education Addresses Medications Prescribed at Discharge*
- *Education Addresses Risk Factors for Stroke*
- *Education Addresses Warning Signs and Symptoms of Stroke*

Denominator Statement: Ischemic stroke or hemorrhagic stroke patients discharged home.

Included Populations:

- Discharges with an *ICD-9-CM Principal Diagnosis Code* for ischemic or hemorrhagic stroke as defined in Appendix A, Table 8.1 or Table 8.2.

AND

- A discharge to home, home care or court/law enforcement

Excluded Populations:

- Patients less than 18 years of age
- Patients who have a Length of Stay greater than 120 days
- Patients with *Comfort Measures Only* documented
- Patients enrolled in clinical trials
- Patients admitted for *Elective Carotid Intervention*

Data Elements:

- *Admission Date*
- *Birthdate*
- *Clinical Trial*
- *Comfort Measures Only*
- *Discharge Date*
- *Discharge Disposition*
- *Elective Carotid Intervention*
- *ICD-9-CM Principal Diagnosis Code*

Risk Adjustment: No

Data Collection Approach: Retrospective data sources for required data elements include administrative data and medical record documents. Some hospitals may prefer to gather data concurrently by identifying patients in the population of interest. This approach provides opportunities for improvement at the point of care/service. However, complete documentation includes the principal or other ICD-9-CM diagnosis and procedure codes, which require retrospective data entry.

Data Accuracy: Variation may exist in the assignment of ICD-9-CM codes; therefore, coding practices may require evaluation to ensure consistency.

Measure Analysis Suggestions: None

Sampling: Yes, please refer to the measure set specific sampling requirements and for additional information see the Population and Sampling Specifications section.

Data Reported As: Aggregate rate generated from count data reported as a proportion

Selected References:

- Anderson, R. T., F. Camacho, A. I. Iaconi, C. H. Tegeler, and R. Balkrishnan. "Enhancing the Effectiveness of Community Stroke Risk Screening: A Randomized Controlled Trial." [In eng]. *J Stroke Cerebrovasc Dis* 20, no. 4 (Jul-Aug 2011): 330-5.
- Boysen, G., L. H. Krarup, X. Zeng, A. Oskedra, J. Korv, G. Andersen, C. Gluud, *et al.* "Exstroke Pilot Trial of the Effect of Repeated Instructions to Improve Physical Activity after Ischaemic Stroke: A Multinational Randomised Controlled Clinical Trial." [In eng]. *BMJ* 339 (2009): b2810.
- Byers, A. M., L. Lamanna, and A. Rosenberg. "The Effect of Motivational Interviewing after Ischemic Stroke on Patient Knowledge and Patient Satisfaction with Care: A Pilot Study." [In eng]. *J Neurosci Nurs* 42, no. 6 (Dec 2010): 312-22.
- Centers for Disease Control and Prevention. "Prevalence and Most Common Causes of Disability among Adults--United States, 2005." [In eng]. *MMWR Morb Mortal Wkly Rep* 58, no. 16 (May 1 2009): 421-6.
- Chan, Y. F., R. Lavery, N. Fox, R. Kwon, S. Zinzuwadia, R. Massone, and D. Livingston. "Effect of an Educational Video on Emergency Department Patient Stroke Knowledge." [In eng]. *J Emerg Med* 34, no. 2 (Feb 2008): 215-20.
- Davis, S. M., D. Martinelli, B. Braxton, K. Kutrovac, and T. Crocco. "The Impact of the Extended Parallel Process Model on Stroke Awareness: Pilot Results from a Novel Study." [In eng]. *Stroke* 40, no. 12 (Dec 2009): 3857-63.
- Dromerick, A. W., M. C. Gibbons, D. F. Edwards, D. E. Farr, M. L. Giannetti, B. Sanchez, N. M. Shara, *et al.* "Preventing Recurrence of Thromboembolic Events through Coordinated Treatment in the District of Columbia." [In eng]. *Int J Stroke* 6, no. 5 (Oct 2011): 454-60.
- Duncan, P. W., R. Zorowitz, B. Bates, J. Y. Choi, J. J. Glasberg, G. D. Graham, R. C. Katz, K. Lamberty, and D. Reker. "Management of Adult Stroke Rehabilitation Care: A Clinical Practice Guideline." [In eng]. *Stroke* 36, no. 9 (Sep 2005): e100-43.
- Eames, S., T. Hoffmann, L. Worrall, and S. Read. "Delivery Styles and Formats for Different Stroke Information Topics: Patient and Carer Preferences." [In eng]. *Patient Educ Couns* 84, no. 2 (Aug 2011): e18-23.
- Eames, S., T. Hoffmann, L. Worrall, and S. Read. "Stroke Patients' and Carers' Perception of Barriers to Accessing Stroke Information." [In eng]. *Top Stroke Rehabil* 17, no. 2 (Mar-Apr 2010): 69-78.
- Evans, R. L., A. L. Matlock, D. S. Bishop, S. Stranahan, and C. Pederson. "Family Intervention after Stroke: Does Counseling or Education Help?" [In eng]. *Stroke* 19, no. 10 (Oct 1988): 1243-9.
- Furie, K. L., S. E. Kasner, R. J. Adams, G. W. Albers, R. L. Bush, S. C. Fagan, J. L. Halperin, *et al.* "Guidelines for the Prevention of Stroke in Patients with Stroke or Transient Ischemic Attack: A Guideline for Healthcare Professionals from the American Heart Association/American Stroke Association." [In eng]. *Stroke* 42, no. 1 (Jan 2011): 227-76.

- Goldstein, L. B., C. D. Bushnell, R. J. Adams, L. J. Appel, L. T. Braun, S. Chaturvedi, M. A. Creager, *et al.* "Guidelines for the Primary Prevention of Stroke: A Guideline for Healthcare Professionals from the American Heart Association/American Stroke Association." [In eng]. *Stroke* 42, no. 2 (Feb 2011): 517-84.
- Gresham, G. E., P. W. Duncan, W. B. Stason, H. P. Adams, A. M. Adelman, D. N. Alexander, D. S. Bishop *et al.* "Post-stroke rehabilitation. Clinical practice guideline, no. 16. Rockville, MD: US Department of Health and Human Services." *Public Health Service, Agency for Health Care Policy and Research* (1995): 95-0062.
- Hafsteinsdottir, T. B., M. Vergunst, E. Lindeman, and M. Schuurmans. "Educational Needs of Patients with a Stroke and Their Caregivers: A Systematic Review of the Literature." [In eng]. *Patient Educ Couns* 85, no. 1 (Oct 2011): 14-25.
- Harrington, R., G. Taylor, S. Hollinghurst, M. Reed, H. Kay, and V. A. Wood. "A Community-Based Exercise and Education Scheme for Stroke Survivors: A Randomized Controlled Trial and Economic Evaluation." [In eng]. *Clin Rehabil* 24, no. 1 (Jan 2010): 3-15.
- "Kaiser Permanente Clinical Practice Guidelines for Acute Stroke Quartet III Inpatient Management." The Permanente Medical Group, <http://www.kaiserpapers.org/cajud/acutestroke/inpaman.html>.
- Jauch, E. C., J. L. Saver, H. P. Adams, Jr., A. Bruno, J. J. Connors, B. M. Demaerschalk, P. Khatri, *et al.* "Guidelines for the Early Management of Patients with Acute Ischemic Stroke: A Guideline for Healthcare Professionals from the American Heart Association/American Stroke Association." [In Eng]. *Stroke* (Jan 31 2013).
- Lindsay, M. P., G. Gubitz, M. Bayley, M. D. Hill, C. Davies-Schinkel, S. Singh, and S. Phillips. "Canadian Best Practice Recommendations for Stroke Care (Update 2010)." In, *The Canadian Stroke Strategy* (2010): 17-20, 129-50. http://www.strokebestpractices.ca/wp-content/uploads/2011/04/2010BPR_ENG.pdf
- Lorig, K. R., D. S. Sobel, A. L. Stewart, B. W. Brown, Jr., A. Bandura, P. Ritter, V. M. Gonzalez, D. D. Laurent, and H. R. Holman. "Evidence Suggesting That a Chronic Disease Self-Management Program Can Improve Health Status While Reducing Hospitalization: A Randomized Trial." [In eng]. *Med Care* 37, no. 1 (Jan 1999): 5-14.
- Maasland, L., D. Brouwer-Goossensen, H. M. den Hertog, P. J. Koudstaal, and D. W. Dippel. "Health Education in Patients with a Recent Stroke or Transient Ischaemic Attack: A Comprehensive Review." [In eng]. *Int J Stroke* 6, no. 1 (Feb 2011): 67-74.
- Ostwald, S. K., S. Davis, G. Hersch, C. Kelley, and K. M. Godwin. "Evidence-Based Educational Guidelines for Stroke Survivors after Discharge Home." [In eng]. *J Neurosci Nurs* 40, no. 3 (Jun 2008): 173-9, 91.
- Roger, V. L., A. S. Go, D. M. Lloyd-Jones, E. J. Benjamin, J. D. Berry, W. B. Borden, D. M. Bravata, *et al.* "Heart Disease and Stroke Statistics--2012 Update: A Report from the American Heart Association." [In eng]. *Circulation* 125, no. 1 (Jan 3 2012): e2-e220.

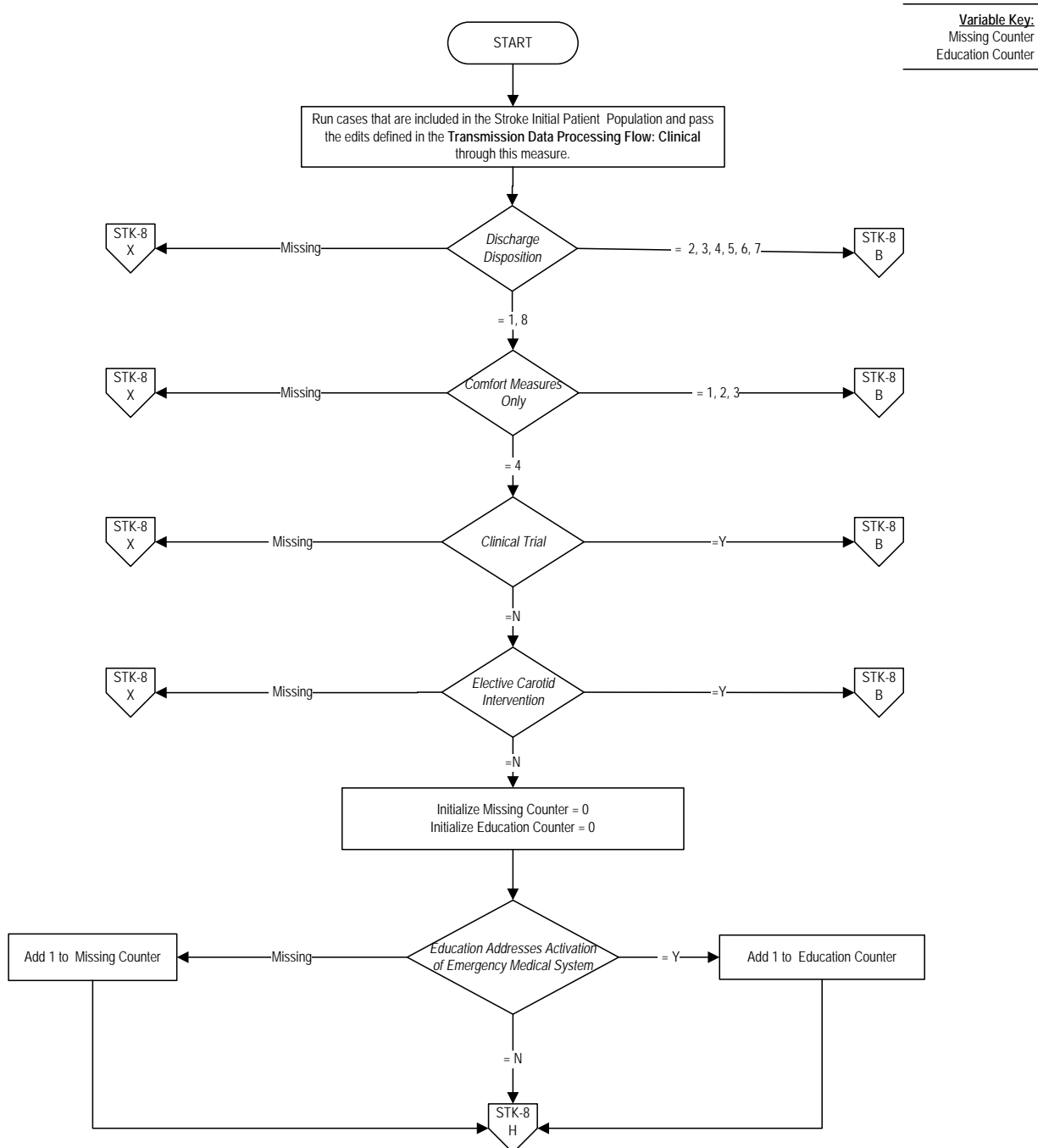
- Smith, J., A. Forster, A. House, P. Knapp, J. Wright, and J. Young. "Information Provision for Stroke Patients and Their Caregivers." [In eng]. *Cochrane Database Syst Rev*, no. 2 (2008): CD001919.
- Yvonne Chan, Y. F., R. Nagurka, L. D. Richardson, S. B. Zaets, M. B. Brimacombe, and S. R. Levine. "Effectiveness of Stroke Education in the Emergency Department Waiting Room." [In eng]. *J Stroke Cerebrovasc Dis* 19, no. 3 (May 2010): 209-15.

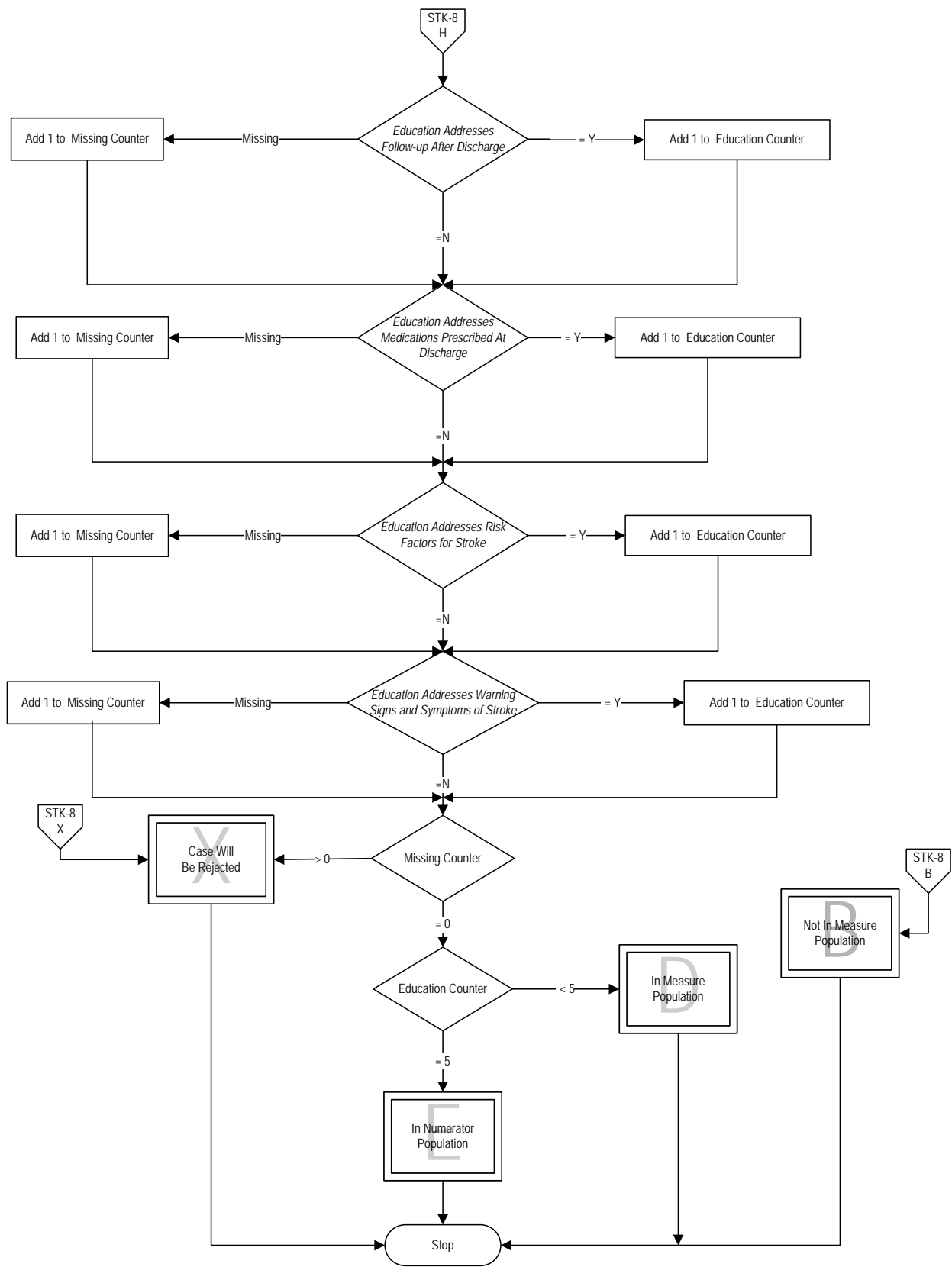
STK - 8: Stroke Education

Numerator: Ischemic or hemorrhagic stroke patients with documentation that they or their caregivers were given educational material addressing **all** of the following:

1. Activation of emergency medical system
2. Follow-up after discharge
3. Medications prescribed at discharge
4. Risk factors for stroke
5. Warning signs and symptoms of stroke

Denominator: Ischemic stroke or hemorrhagic stroke patients discharged home.





STK-8: Stroke Education

Numerator: Ischemic or hemorrhagic stroke patients with documentation that they or their caregivers were given educational material addressing **all** of the following:

1. Activation of emergency medical system
2. Follow-up after discharge
3. Medications prescribed at discharge
4. Risk factors for stroke
5. Warning signs and symptoms of stroke

Denominator: Ischemic stroke or hemorrhagic stroke patients discharged home.

Variable Key: Missing Counter, Education Counter

1. Start processing. Run cases that are included in the Stroke (STK) Initial Patient Population and pass the edits defined in the Transmission Data Processing Flow: Clinical through this measure.
2. Check Discharge Disposition
 - a. If Discharge Disposition equals 2, 3, 4, 5, 6 or 7, the case will proceed to a Measure Category Assignment of B and will not be in the Measure Population. Stop processing.
 - b. If Discharge Disposition equals 1 or 8 continue processing and proceed to Comfort Measures Only.
3. Check Comfort Measures Only
 - a. If Comfort Measures Only is missing, the case will proceed to a Measure Category Assignment of X and will be rejected. Stop processing.
 - b. If Comfort Measures Only equals 1, 2, or 3, the case will proceed to a Measure Category Assignment of B and will not be in the Measure Population. Stop processing.
 - c. If Comfort Measures Only equals 4, continue processing and proceed to Clinical Trial.
4. Check Clinical Trial
 - a. If Clinical Trial is missing, the case will proceed to a Measure Category Assignment of X and will be rejected. Stop processing.
 - b. If Clinical Trial equals Yes, the case will proceed to a Measure Category Assignment of B and will not be in the Measure Population. Stop processing.
 - c. If Clinical Trial equals No, continue processing and proceed to Elective Carotid Intervention.
5. Check Elective Carotid Intervention
 - a. If Elective Carotid Intervention is missing, the case will proceed to a Measure Category Assignment of X and will be rejected. Stop processing.

- b. If Elective Carotid Intervention equals Yes, the case will proceed to a Measure Category Assignment of B and will not be in the Measure Population. Stop processing.
 - c. If Elective Carotid Intervention equals No, continue processing and initialize missing and education counters.
6. Initialize Missing Counter and Education Counter. Set both counters equal to zero. Continue processing and proceed to Education Addresses Activation of Emergency Medical System.
7. Check Education Addresses Activation of Emergency Medical System
 - a. If Education Addresses Activation of Emergency Medical System is missing, add one to the Missing Counter. Continue processing and proceed to Education Addresses Follow-up After Discharge.
 - b. If Education Addresses Activation of Emergency Medical System equals Yes, add one to the Education Counter. Continue processing and proceed to Education Addresses Follow-up After Discharge.
 - c. If Education Addresses Activation of Emergency Medical System equals No, continue processing and proceed to Education Addresses Follow-up After Discharge.
8. Check Education Addresses Follow-up After Discharge
 - a. If Education Addresses Follow-up After Discharge is missing, add one to the Missing Counter. Continue processing and proceed to Education Addresses Medications Prescribed At Discharge.
 - b. If Education Addresses Follow-up After Discharge equals Yes, add one to the Education Counter. Continue processing and proceed to Education Addresses Medications Prescribed At Discharge.
 - c. If Education Addresses Follow-up After Discharge equals No, continue processing and proceed to Education Addresses Medications Prescribed At Discharge.
9. Check Education Addresses Medications Prescribed At Discharge
 - a. If Education Addresses Medications Prescribed At Discharge is missing, add one to the Missing Counter. Continue processing and proceed to Education Addresses Risk Factors for Stroke.
 - b. If Education Addresses Medications Prescribed At Discharge equals Yes, add one to the Education Counter. Continue processing and proceed to Education Addresses Risk Factors for Stroke.
 - c. If Education Addresses Medications Prescribed At Discharge equals No, continue processing and proceed to Education Addresses Risk Factors for Stroke.
10. Check Education Addresses Risk Factors for Stroke

- a. If Education Addresses Risk Factors for Stroke is missing, add one to the Missing Counter. Continue processing and proceed to Education Addresses Warning Signs and Symptoms of Stroke.
 - b. If Education Addresses Risk Factors for Stroke equals Yes, add one to the Education Counter. Continue processing and proceed to Education Addresses Warning Signs and Symptoms of Stroke.
 - c. If Education Addresses Risk Factors for Stroke equals No, continue processing and proceed to Education Addresses Warning Signs and Symptoms of Stroke.
11. Check Education Addresses Warning Signs and Symptoms of Stroke
- a. If Education Addresses Warning Signs and Symptoms of Stroke is missing, add one to the Missing Counter. Continue processing and proceed to the Missing Counter.
 - b. If Education Addresses Warning Signs and Symptoms of Stroke equals Yes, add one to the Education Counter. Continue processing and proceed to the Missing Counter.
 - c. If Education Addresses Warning Signs and Symptoms of Stroke equals No, continue processing and proceed to the Missing Counter.
12. Check Missing Counter
- a. If the Missing Counter is greater than zero, the case will proceed to a Measure Category Assignment of X and will be rejected. Stop processing.
 - b. If the Missing Counter equals zero, continue processing and proceed to Education Counter.
13. Check Education Counter
- a. If the Education Counter is less than five, the case will proceed to a Measure Category Assignment of D and will be in the Measure Population. Stop processing.
 - b. If the Education Counter equals five, the case will proceed to a Measure Category Assignment of E and will be in the Numerator Population. Stop processing.