

NQF ENDORSED VOLUNTARY CONSENSUS STANDARDS FOR HOSPITAL CARE

Measure Information Form Collected For: The Joint Commission Only CMS Voluntary Only

Measure Set: Stroke (STK)

Set Measure ID #: STK-10

Performance Measure Name: Assessed for Rehabilitation

Description: Ischemic or hemorrhagic stroke patients who were assessed for rehabilitation services.

Rationale: Each year about 700,000 people experience a new or recurrent stroke, which is the nation's third leading cause of death. Approximately two thirds of these individuals survive and require rehabilitation. Stroke is a leading cause of serious, long-term disability in the United States, with about 4.4 million stroke survivors alive today. Forty percent of stroke patients are left with moderate functional impairment and 15 to 30 percent with severe disability. More than 60% of those who have experienced stroke, serious injury, or a disabling disease have never received rehabilitation. Stroke rehabilitation should begin as soon as the diagnosis of stroke is established and life-threatening problems are under control. Among the high priorities for stroke are to mobilize the patient and encourage resumption of self-care activities as soon as possible. A considerable body of evidence indicates better clinical outcomes when patients with stroke are treated in a setting that provides coordinated, multidisciplinary stroke-related evaluation and services. Effective rehabilitation interventions initiated early following stroke can enhance the recovery process and minimize functional disability. The primary goal of rehabilitation is to prevent complications, minimize impairments, and maximize function.

Type of Measure: Process

Improvement Noted As: An increase in rate

Numerator Statement: Ischemic or hemorrhagic stroke patients assessed for or who received rehabilitation services.

Included Populations: Not applicable

Excluded Populations: None

Data Elements:

Assessed for Rehabilitation Services

Denominator Statement: Ischemic or hemorrhagic stroke patients.

Included Populations:

Discharges with an *ICD-9-CM Principal Diagnosis Code* for ischemic or hemorrhagic stroke as defined in Appendix A, Table 8.1 or Table 8.2.

Excluded Populations:

- Patients less than 18 years of age
- Patients who have a Length of Stay greater than 120 days
- Patients with *Comfort Measures Only* documented
- Patients enrolled in clinical trials
- Patients admitted for *Elective Carotid Intervention*
- Patients discharged to another hospital
- Patients who left against medical advice
- Patients who expired
- Patients discharged to home for hospice care
- Patients discharged to a health care facility for hospice care

Data Elements:

- *Admission Date*
- *Birthdate*
- *Clinical Trial*
- *Comfort Measures Only*
- *Discharge Date*
- *Discharge Disposition*
- *Elective Carotid Intervention*
- *ICD-9-CM Principal Diagnosis Code*

Risk Adjustment: No

Data Collection Approach: Retrospective data sources for required data elements include administrative data and medical record documents. Some hospitals may prefer to gather data concurrently by identifying patients in the population of interest. This approach provides opportunities for improvement at the point of care/service. However, complete documentation includes the principal or other ICD-9-CM diagnosis and procedure codes, which require retrospective data entry.

Data Accuracy: Variation may exist in the assignment of ICD-9-CM codes; therefore, coding practices may require evaluation to ensure consistency.

Measure Analysis Suggestions: None

Sampling: Yes, please refer to the measure set specific sampling requirements and for additional information see the Population and Sampling Specifications section.

Data Reported As: Aggregate rate generated from count data reported as a proportion.

Selected References:

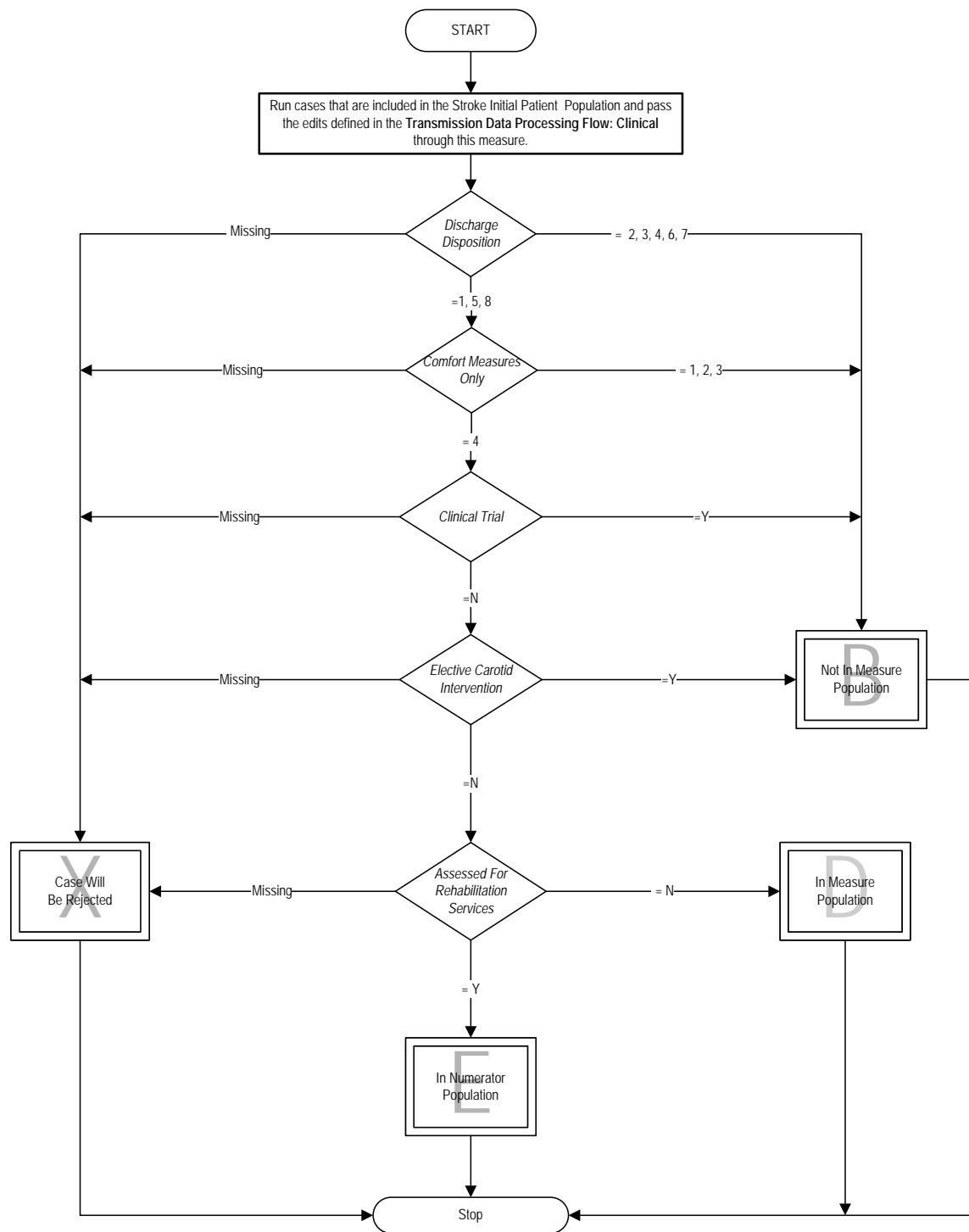
- Affairs, Department of Veterans, and Department of Defense. "Va/Dod Clinical Practice Guideline for the Management of Stroke Rehabilitation in the Primary Care Setting," In, (2003).
- Bates, B., J. Y. Choi, P. W. Duncan, J. J. Glasberg, G. D. Graham, R. C. Katz, K. Lamberty, *et al.* "Veterans Affairs/Department of Defense Clinical Practice Guideline for the Management of Adult Stroke Rehabilitation Care: Executive Summary." [In eng]. *Stroke* 36, no. 9 (Sep 2005): 2049-56.
- Centers for Disease Control and Prevention. "Prevalence and Most Common Causes of Disability among Adults--United States, 2005." [In eng]. *MMWR Morb Mortal Wkly Rep* 58, no. 16 (May 1 2009): 421-6.
- Duncan, P. W., R. Zorowitz, B. Bates, J. Y. Choi, J. J. Glasberg, G. D. Graham, R. C. Katz, K. Lamberty, and D. Reker. "Management of Adult Stroke Rehabilitation Care: A Clinical Practice Guideline." [In eng]. *Stroke* 36, no. 9 (Sep 2005): e100-43.
- Foley, N., R. Teasell, S. Bhogal, and M. Speechley. "The Efficacy of Stroke Rehabilitation." In, (2011): 1-50. http://www.ebrsr.com/reviews_details.php?30.
- Gresham, G. E., P. W. Duncan, W. B. Stason, H. P. Adams, A. M. Adelman, D. N. Alexander, D. S. Bishop *et al.* "Post-stroke rehabilitation. Clinical practice guideline, no. 16. Rockville, MD: US Department of Health and Human Services." *Public Health Service, Agency for Health Care Policy and Research* (1995): 95-0062.
- Kalra, L., A. Evans, I. Perez, M. Knapp, C. Swift, and N. Donaldson. "A Randomised Controlled Comparison of Alternative Strategies in Stroke Care." [In eng]. *Health Technol Assess* 9, no. 18 (May 2005): iii-iv, 1-79.
- Keith, R. A. "Rehabilitation after Stroke: Cost-Effectiveness Analyses." [In eng]. *J R Soc Med* 89, no. 11 (Nov 1996): 631-3.
- Langhorne, P., B. O. Williams, W. Gilchrist, and K. Howie. "Do Stroke Units Save Lives?" [In eng]. *Lancet* 342, no. 8868 (Aug 14 1993): 395-8.
- "Management of Patients with Stroke: Rehabilitation, Prevention and Management of Complications, and Discharge Planning. A National Clinical Guideline." In, (2002). <http://www.nhsggc.org.uk/content/mediaassets/pdf/HSD/sign64.pdf>.
- Moodie, M., D. Cadilhac, D. Pearce, C. Mihalopoulos, R. Carter, S. Davis, G. Donnan, and Scopes Study Group. "Economic Evaluation of Australian Stroke Services: A Prospective, Multicenter Study Comparing Dedicated Stroke Units with Other Care Modalities." [In eng]. *Stroke* 37, no. 11 (Nov 2006): 2790-5.
- Noorani, H. Z., B. Brady, L. McGahan, R. Teasell, B. Skidmore, and T. J. Doherty. "Stroke Rehabilitation Services: Systematic Reviews of the Clinical and Economic Evidence." In *Ottawa: Canadian Coordinating, Office for Health Technology Assessment*, 2003.
- Ottenbacher, K. J., and S. Jannell. "The Results of Clinical Trials in Stroke Rehabilitation Research." [In eng]. *Arch Neurol* 50, no. 1 (Jan 1993): 37-44.

- "Outcomes in Stroke Rehabilitation." *Topics in Stroke Rehabilitation* 12, no. 4 (Fall 2005): 1-10, 11-19, 20-27, 28-36, 37-49.
- "Rehabilitation Helps Stroke Patients Recover Skills ". American Academy of Physical Medicine and Rehabilitation,
<http://www.aapmr.org/patients/conditions/neurologic/Pages/recover.aspx>.
- Saka, O., V. Serra, Y. Samyshkin, A. McGuire, and C. C. Wolfe. "Cost-Effectiveness of Stroke Unit Care Followed by Early Supported Discharge." [In eng]. *Stroke* 40, no. 1 (Jan 2009): 24-9.
- Stroke, National Institute of Neurological Disorders and. "Post-Stroke Rehabilitation Fact Sheet."
<http://www.ninds.nih.gov/disorders/stroke/poststrokerehab.htm>.
- "Urgency Key but Perseverance Pays Off." American Academy of Physical Medicine and Rehabilitation,
http://www.zoominfo.com/CachedPage/?archive_id=0&page_id=389260562&page_url=//www.aapmr.org/condtreat/rehab/strokeusa.htm&page_last_updated=2010-07-28T02:27:25&firstName=Charles&lastName=Levy.

STK - 10: Assessed for Rehabilitation

Numerator: Ischemic or hemorrhagic stroke patients assessed for or who received rehabilitation services.

Denominator: Ischemic or hemorrhagic stroke patients.



STK-10: Assessed for Rehabilitation

Numerator: Ischemic or hemorrhagic stroke patients assessed for or who received rehabilitation services.

Denominator: Ischemic or hemorrhagic stroke patients.

1. Start processing. Run cases that are included in the Stroke (STK) Initial Patient Population and pass the edits defined in the Transmission Data Processing Flow: Clinical through this measure.
2. Check Discharge Disposition
 - a. If Discharge Disposition equals 2, 3, 4, 6 or 7, the case will proceed to a Measure Category Assignment of B and will not be in the Measure Population. Stop processing.
 - b. If Discharge Disposition equals 1, 5 or 8, continue processing and proceed to Comfort Measures Only.
3. Check Comfort Measures Only
 - a. If Comfort Measures Only is missing, the case will proceed to a Measure Category Assignment of X and will be rejected. Stop processing.
 - b. If Comfort Measures Only equals 1, 2, or 3, the case will proceed to a Measure Category Assignment of B and will not be in the Measure Population. Stop processing.
 - c. If Comfort Measures Only equals 4, continue processing and proceed to Clinical Trial.
4. Check Clinical Trial
 - a. If Clinical Trial is missing, the case will proceed to a Measure Category Assignment of X and will be rejected. Stop processing.
 - b. If Clinical Trial equals Yes, the case will proceed to a Measure Category Assignment of B and will not be in the Measure Population. Stop processing.
 - c. If Clinical Trial equals No, continue processing and proceed to Elective Carotid Intervention.
5. Check Elective Carotid Intervention
 - a. If Elective Carotid Intervention is missing, the case will proceed to a Measure Category Assignment of X and will be rejected. Stop processing.
 - b. If Elective Carotid Intervention equals Yes, the case will proceed to a Measure Category Assignment of B and will not be in the Measure Population. Stop processing.
 - c. If Elective Carotid Intervention equals No, continue processing and proceed to Assessed for Rehabilitation Services.

6. Check Assessed for Rehabilitation Services
 - a. If Assessed for Rehabilitation Services is missing, the case will proceed to a Measure Category Assignment of X and will be rejected. Stop processing.
 - b. If Assessed for Rehabilitation Services equals No, the case will proceed to a Measure Category Assignment of D and will be in the Measure Population. Stop processing.
 - c. If Assessed for Rehabilitation Services equals Yes, the case will proceed to a Measure Category Assignment of E and will be in the Numerator Population. Stop processing